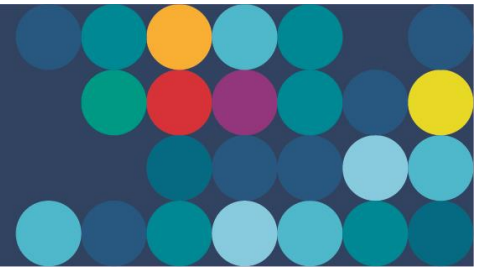


Bushfires and Water Supply – this information could save your life



Do you live in or near a bushfire prone area?

Then now is the time to check that you are prepared in the event of a fire.



Water Corporation would also like to remind you that if **you plan to stay and defend your home you must have an INDEPENDENT water supply and pumping capability.** Scheme water may not be available due to damaged infrastructure, extreme demand depleting supply and pressure, or a cut to power which is used to pump water.

We have made our own preparations for the 2018/19 bushfire season by readying equipment and systems to cope with extreme conditions. Despite these efforts, it is likely there will be a reduction in water pressure, and scheme water supply tanks may run empty in the event of fire.

The multi-hazard [Emergency WA website](#) will give you better access to emergency information and community safety warnings.

Fire or life threatening emergencies	000
SES Emergency Assistance	132 500
Emergency Information	1300 657 209